

CLASSROOM HANDS-UP SURVEY
November 6-10, 2017

Grades: P-6 **Teacher:** 19 classes only (all but G1-Levesque) **# Students:** 368.3 (Daily Average)

Please complete this survey **during the week of November 6-10, 2017** using **hands-up**.

1. Ask students: "How did you travel to school this morning? Raise your hand if you..."

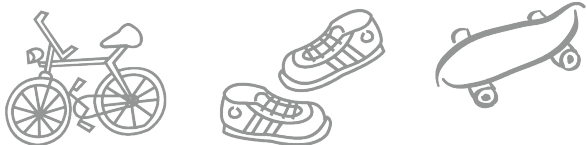
	Weather Example: Rainy/6C	Walked	Walked part-way*	Bicycle	School Bus	Taxi or Transit	Carpool (2 or more families)	Car (Just my family)	Other ?	Total
Mon	rainy	222	9	19	29	3	2	93	17	394
Tues	cold	207	18	20	27	2	0	88	11	373
Wed	cloudy	187	9	17	31	1	3	107	7	362
Thurs	sunny	202	5	20	30	1	1	101	0	360
Fri	cloudy	208	7	13	28	0	0	94	2	339
Total		1026	48	89	145	7	6	483	37	1841
Daily Average =Total/5		205.2	9.6	17.8	29	1.4	1.2	96.6	7.4	368.2

*Walked at least one entire block.

2. Ask students: "How will you travel from school today? Raise your hand if you..."

	Weather Example: Sunny/25	Walked	Walked part-way*	Bicycle	School Bus	Taxi or Transit	Carpool (2 or more families)	Car (Just my family)	Other ?	Total
Mon	rainy	189	17	19	29	2	1	95	20	372
Tues	cold	194	28	24	29	2	4	93	8	382
Wed	cloudy	183	29	15	28	1	5	99	8	368
Thurs	sunny	188	15	18	31	2	2	93	1	350
Fri	cloudy	193	13	15	34	1	0	113	1	370
Total		947	102	91	151	8	12	493	38	1842
Daily Average =Total/5		189.4	20.4	18.2	30.2	1.6	2.4	98.6	7.6	368.4

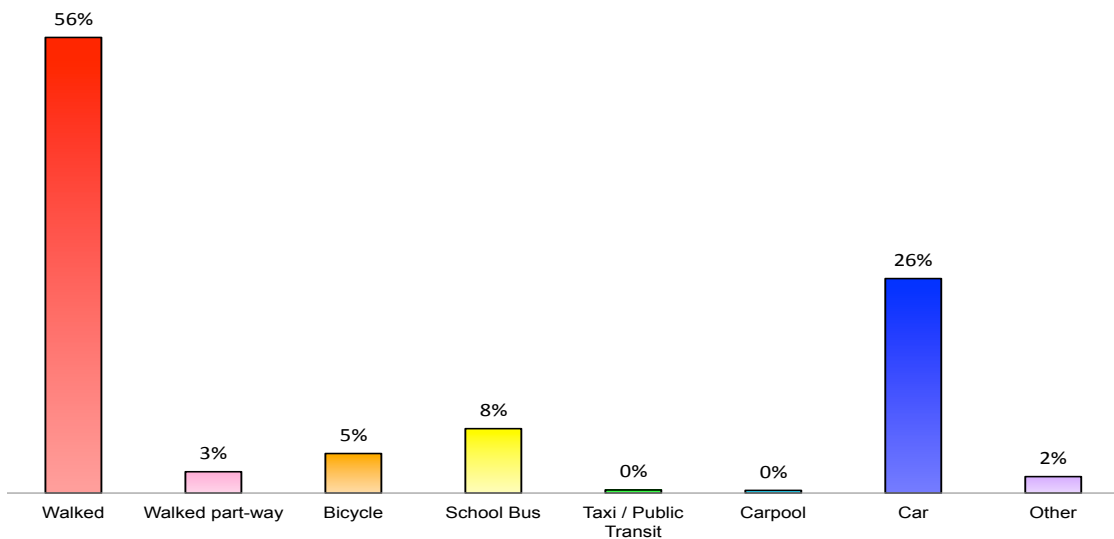
*Walked at least one entire block.



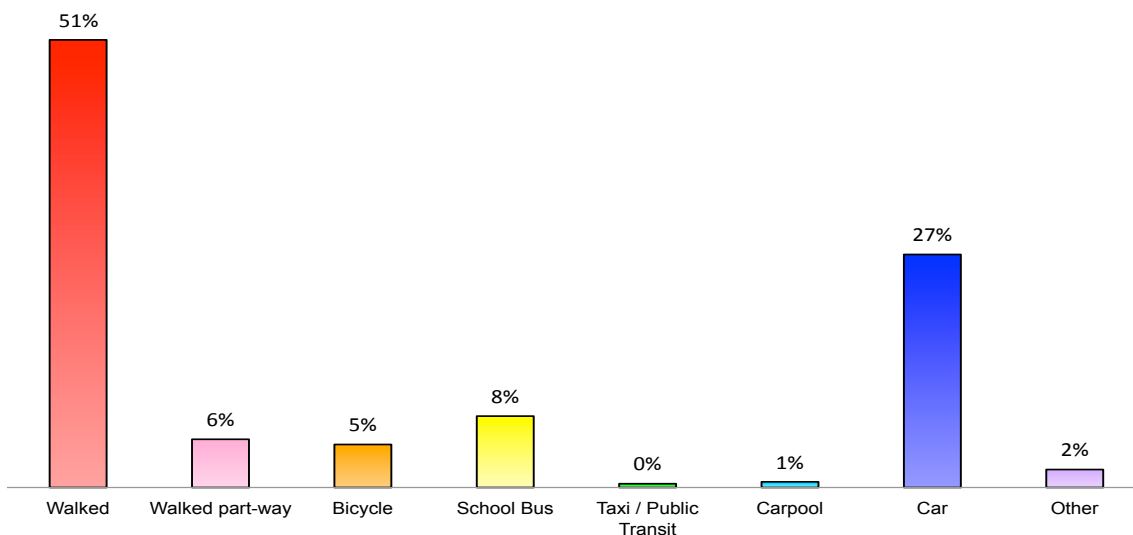
CLASSROOM HANDS-UP SURVEY RESULTS

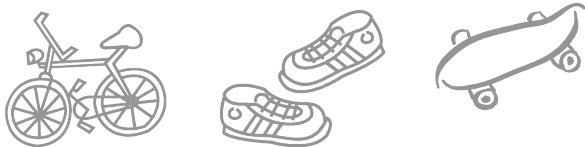
November 6-10, 2017

**Student Hands-Up Survey:
Total Travel Mode TO School Over a Week**



**Student Hands-Up Survey:
Total Travel Mode FROM School Over a Week**





CLASSROOM HANDS-UP SURVEY
Comparison 2010, 2011 & 2017

DATA FROM: 12-18 October 2010, 17-21 October 2011 & 6-10 November 2017

